

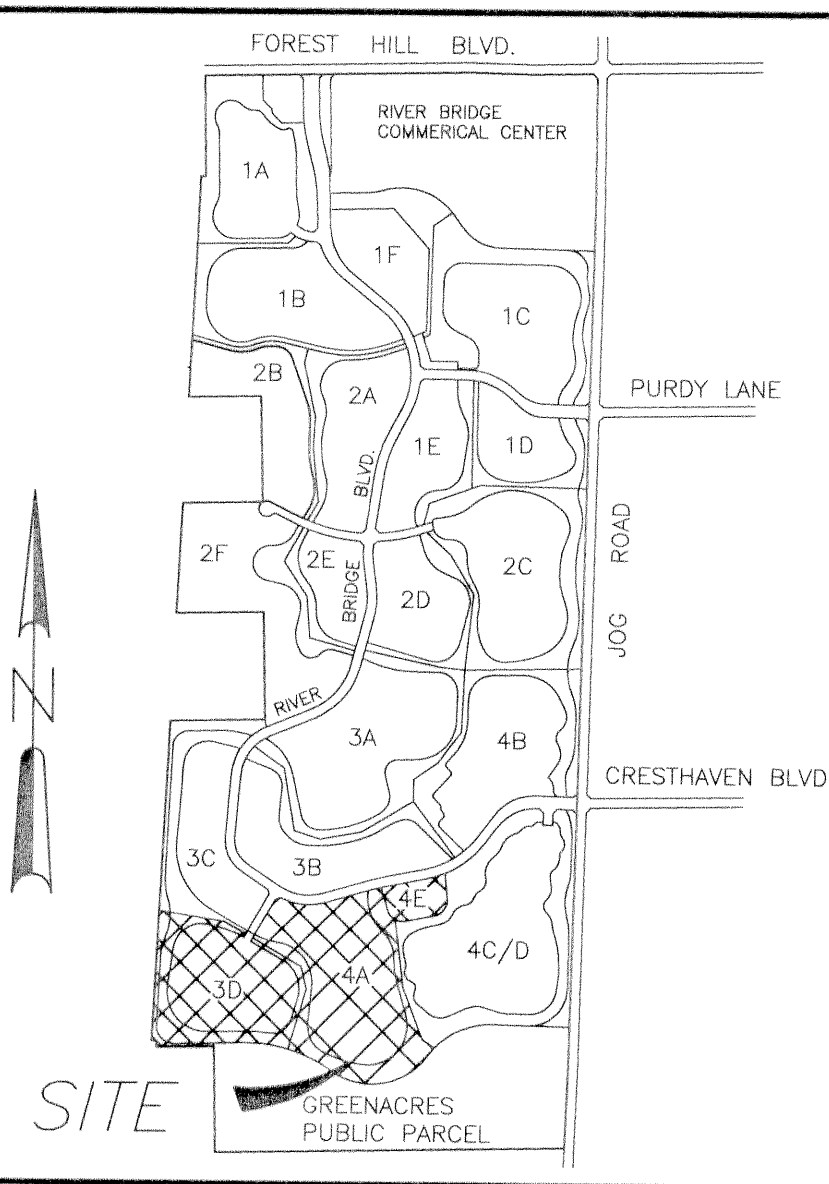
STATE OF FLORIDA
COUNTY OF PALM BEACH
This plat was filed for record at _____ this _____ day of _____, 1994, and duly recorded in Plat Book No. _____ on Pages _____ thru _____
DORTHY H. WILKIN
Clerk Circuit Court
By: _____

RIVER BRIDGE P.U.D. PLAT 4C

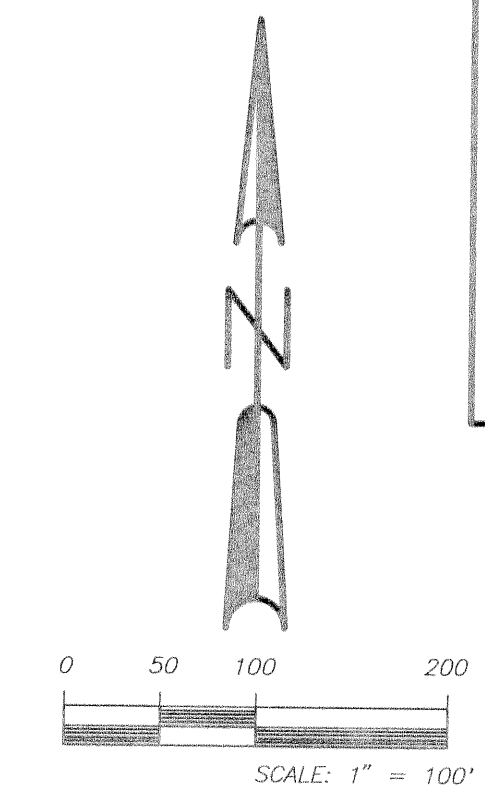
(BEING A REPLAT OF A PORTION OF PALM BEACH FARMS COMPANY PLAT NO. 3 RECORDED IN PLAT BOOK 2, PAGE 47, OF THE PUBLIC RECORDS OF PALM BEACH COUNTY, FLORIDA AND AS ABANDONED BY RESOLUTION R-81-1099 AND RECORDED IN OFFICIAL RECORD BOOK 3595, PAGES 0779 THROUGH 0782 INCLUSIVE, OF SAID PUBLIC RECORDS) LYING IN SECTIONS 15 AND 22, TOWNSHIP 44 SOUTH, RANGE 42 EAST, CITY OF GREENACRES, PALM BEACH COUNTY, FLORIDA.

SEPTEMBER 1994

SHEET 2 OF 2



P.U.D. LOCATION MAP N.T.S.



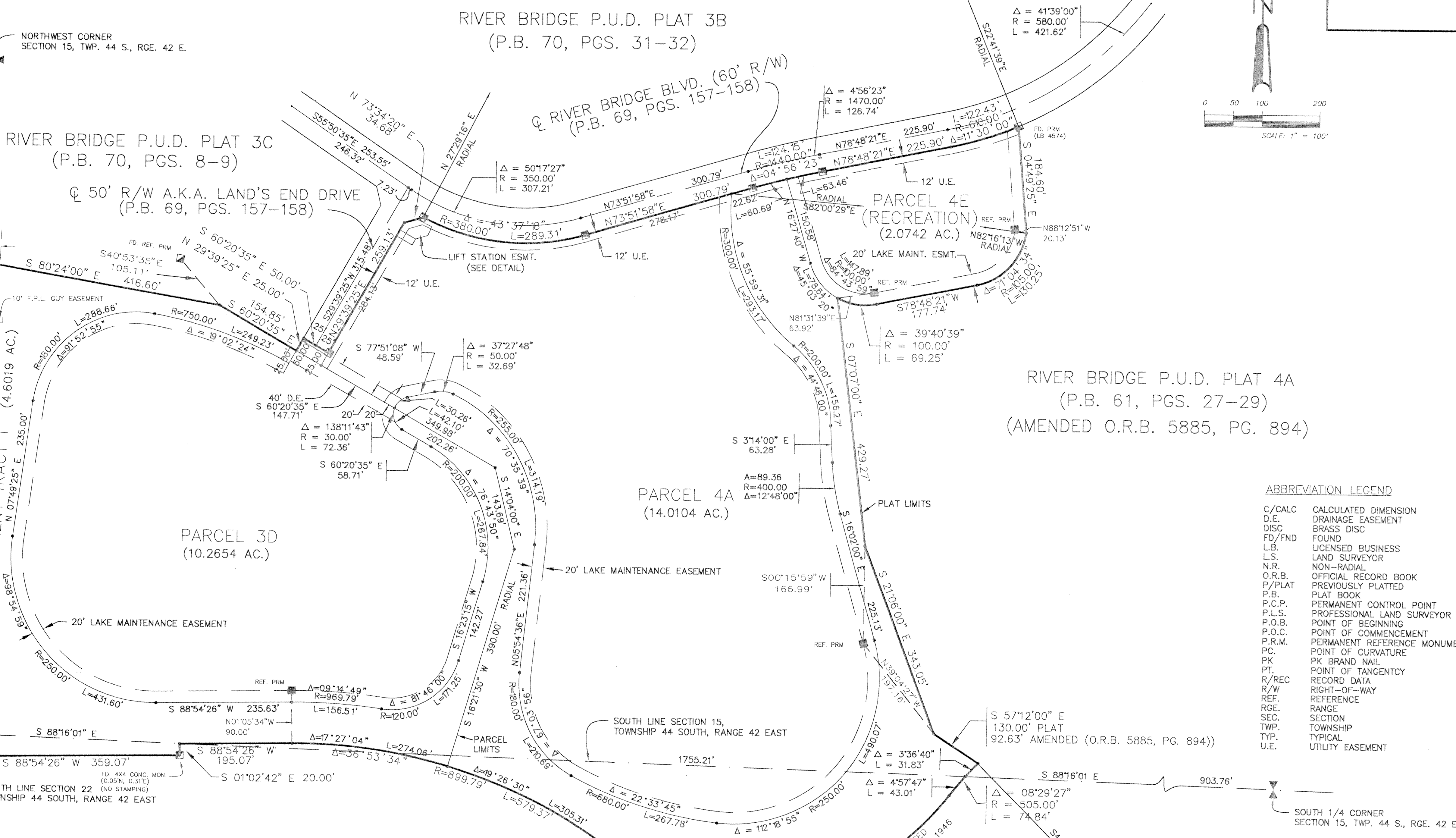
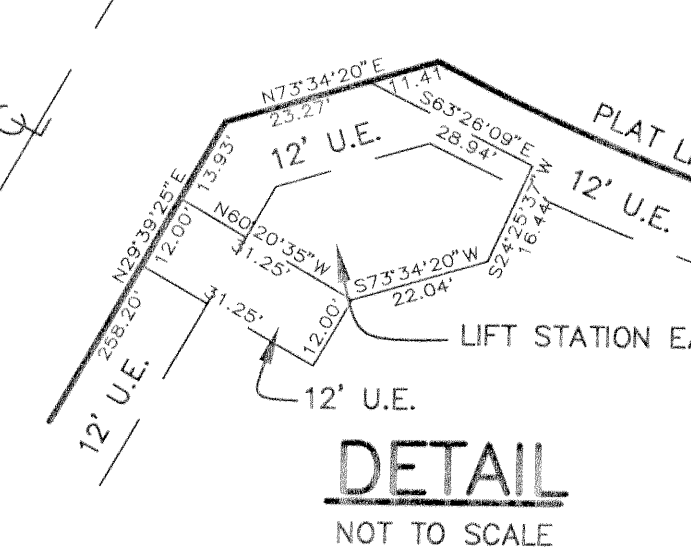
PALM BEACH PINES STATE PARK

POINT OF BEGINNING

SOUTHWEST CORNER SECTION 15, TWP. 44 S., RGE. 42 E.
FD. 4X4 CONC. MON. (0.08"N, 0.15"E) (NO STAMPING)

N 88°16'01" W 34.99'
N 02°24'55" E 37.85'
FD. 4X4 CONC. MON. (0.04"S, 0.14"E) (NO STAMPING)

N 02°47'28" E 4419.45'
N 02°47'28" E 814.00'



PALM BEACH FARMS COMPANY PLAT NO.3 (P.B. 2, PG. 47)
(CITY OF GREENACRES O.R.B. 4563, PG. 1943)
(PUBLIC PARCEL)

ABBREVIATION LEGEND

C/CALC	CALCULATED DIMENSION
D.E.	DRAINAGE EASEMENT
DISC	BRASS DISC
FD/FND	FOUND
L.B.	LICENSED BUSINESS
L.S.	LAND SURVEYOR
N/R.	NON-RADIAL
O.R.B.	OFFICIAL RECORD BOOK
P/PLAT	PREVIOUSLY PLATTED
P.B.	PLAT BOOK
P.C.P.	PERMANENT CONTROL POINT
P.L.S.	PROFESSIONAL LAND SURVEYOR
P.O.B.	POINT OF BEGINNING
P.O.C.	POINT OF COMMENCEMENT
P.R.M.	PERMANENT REFERENCE MONUMENT
PC.	POINT OF CURVATURE
PK	PK BRAND NAIL
PT.	POINT OF TANGENCY
R/REC	RECORD DATA
R/W	RIGHT-OF-WAY
REF.	REFERENCE
RGE.	RANGE
SEC.	SECTION
TWP.	TOWNSHIP
TYP.	TYPICAL
U.E.	UTILITY EASEMENT

SUBDIVISION RIVER BRIDGE PLAT 4C
BOOK 113
PAGE 113
FLOOD MAP
FLOOD ZONE
QUAD
ZIP CODE -
33411
CITY OF GREENACRES

PETSCHÉ & ASSOCIATES, INC.
Professional Engineers - Land Surveyors - Development Consultants - Testing Services
2581 Metrocentre Boulevard, Suite 6, West Palm Beach, Florida 33407 (407) 640-3800
6799 Overseas Highway, Suite 7, Marathon, Florida 33050 (305) 743-5788

RIVER BRIDGE P.U.D. PLAT 4C

SECTIONS 15 & 22, TWP. 44S., RGE 42E.
CITY OF GREENACRES, FLORIDA

Drawn by:	Date:	SCALE:	JOB NUMBER:	SHEET	OF
D.W.OSLUND	SEPT, 1994	1" = 100'	94-022	2	OF 2
Designed by:	Checked by:				
	R. HAGLER				